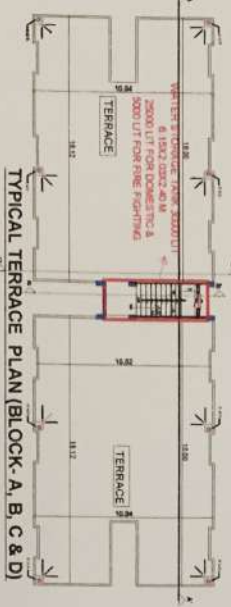




GROUND FLOOR PLAN OF BLOCK-A, B & C



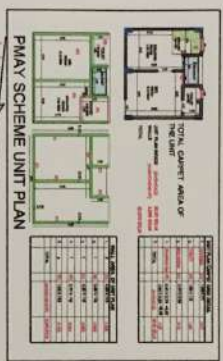
GROUND FLOOR PLAN OF BLOCK-D



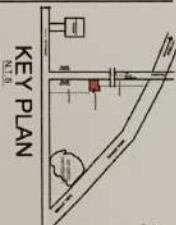
TYPICAL TERRACE PLAN (BLOCK-A, B, C & D)



TYPICAL 1ST, 2ND & 3RD FLOOR PLAN OF BLOCK-A, B, C & D



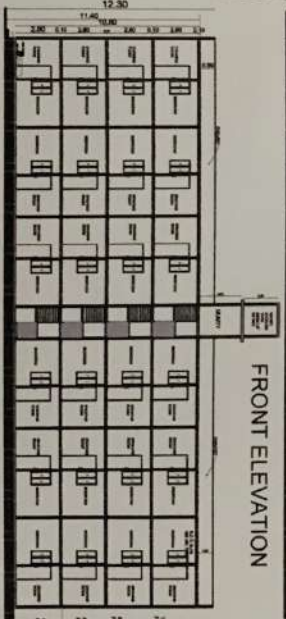
PMA SCHEME UNIT PLAN



KEY PLAN



LAYOUT PLAN



SECTION AA'



SECTION BB'



SECTION CC'



SITE PLAN

NORTH
 MORTGAGED AREA
 REQUIRED @ 20% OF
 SCHEME AREA
 = 20% OF 12871.14 SQ.M
 = 2574.22 SQ.MT

NO.	DESCRIPTION	AREA (SQ.M)
1	PLAT 1 TO 19	12871.14
2	PLAT 20 TO 26	12871.14
3	PLAT 27 TO 29	12871.14
4	PLAT 30 TO 32	12871.14
5	PLAT 33 TO 35	12871.14
6	PLAT 36 TO 38	12871.14
7	PLAT 39 TO 41	12871.14
8	PLAT 42 TO 44	12871.14
9	PLAT 45 TO 47	12871.14
10	PLAT 48 TO 50	12871.14
11	PLAT 51 TO 53	12871.14
12	PLAT 54 TO 56	12871.14
13	PLAT 57 TO 59	12871.14
14	PLAT 60 TO 62	12871.14
15	PLAT 63 TO 65	12871.14
16	PLAT 66 TO 68	12871.14
17	PLAT 69 TO 71	12871.14
18	PLAT 72 TO 74	12871.14
19	PLAT 75 TO 77	12871.14
20	PLAT 78 TO 80	12871.14
21	PLAT 81 TO 83	12871.14
22	PLAT 84 TO 86	12871.14
23	PLAT 87 TO 89	12871.14
24	PLAT 90 TO 92	12871.14
25	PLAT 93 TO 95	12871.14
26	PLAT 96 TO 98	12871.14
27	PLAT 99 TO 101	12871.14
28	PLAT 102 TO 104	12871.14
29	PLAT 105 TO 107	12871.14
30	PLAT 108 TO 110	12871.14
31	PLAT 111 TO 113	12871.14
32	PLAT 114 TO 116	12871.14
33	PLAT 117 TO 119	12871.14
34	PLAT 120 TO 122	12871.14
35	PLAT 123 TO 125	12871.14
36	PLAT 126 TO 128	12871.14
37	PLAT 129 TO 131	12871.14
38	PLAT 132 TO 134	12871.14
39	PLAT 135 TO 137	12871.14
40	PLAT 138 TO 140	12871.14
41	PLAT 141 TO 143	12871.14
42	PLAT 144 TO 146	12871.14
43	PLAT 147 TO 149	12871.14
44	PLAT 150 TO 152	12871.14
45	PLAT 153 TO 155	12871.14
46	PLAT 156 TO 158	12871.14
47	PLAT 159 TO 161	12871.14
48	PLAT 162 TO 164	12871.14
49	PLAT 165 TO 167	12871.14
50	PLAT 168 TO 170	12871.14
51	PLAT 171 TO 173	12871.14
52	PLAT 174 TO 176	12871.14
53	PLAT 177 TO 179	12871.14
54	PLAT 180 TO 182	12871.14
55	PLAT 183 TO 185	12871.14
56	PLAT 186 TO 188	12871.14
57	PLAT 189 TO 191	12871.14
58	PLAT 192 TO 194	12871.14
59	PLAT 195 TO 197	12871.14
60	PLAT 198 TO 200	12871.14
61	PLAT 201 TO 203	12871.14
62	PLAT 204 TO 206	12871.14
63	PLAT 207 TO 209	12871.14
64	PLAT 210 TO 212	12871.14
65	PLAT 213 TO 215	12871.14
66	PLAT 216 TO 218	12871.14
67	PLAT 219 TO 221	12871.14
68	PLAT 222 TO 224	12871.14
69	PLAT 225 TO 227	12871.14
70	PLAT 228 TO 230	12871.14
71	PLAT 231 TO 233	12871.14
72	PLAT 234 TO 236	12871.14
73	PLAT 237 TO 239	12871.14
74	PLAT 240 TO 242	12871.14
75	PLAT 243 TO 245	12871.14
76	PLAT 246 TO 248	12871.14
77	PLAT 249 TO 251	12871.14
78	PLAT 252 TO 254	12871.14
79	PLAT 255 TO 257	12871.14
80	PLAT 258 TO 260	12871.14
81	PLAT 261 TO 263	12871.14
82	PLAT 264 TO 266	12871.14
83	PLAT 267 TO 269	12871.14
84	PLAT 270 TO 272	12871.14
85	PLAT 273 TO 275	12871.14
86	PLAT 276 TO 278	12871.14
87	PLAT 279 TO 281	12871.14
88	PLAT 282 TO 284	12871.14
89	PLAT 285 TO 287	12871.14
90	PLAT 288 TO 290	12871.14
91	PLAT 291 TO 293	12871.14
92	PLAT 294 TO 296	12871.14
93	PLAT 297 TO 299	12871.14
94	PLAT 300 TO 302	12871.14
95	PLAT 303 TO 305	12871.14
96	PLAT 306 TO 308	12871.14
97	PLAT 309 TO 311	12871.14
98	PLAT 312 TO 314	12871.14
99	PLAT 315 TO 317	12871.14
100	PLAT 318 TO 320	12871.14
101	PLAT 321 TO 323	12871.14
102	PLAT 324 TO 326	12871.14
103	PLAT 327 TO 329	12871.14
104	PLAT 330 TO 332	12871.14
105	PLAT 333 TO 335	12871.14
106	PLAT 336 TO 338	12871.14
107	PLAT 339 TO 341	12871.14
108	PLAT 342 TO 344	12871.14
109	PLAT 345 TO 347	12871.14
110	PLAT 348 TO 350	12871.14
111	PLAT 351 TO 353	12871.14
112	PLAT 354 TO 356	12871.14
113	PLAT 357 TO 359	12871.14
114	PLAT 360 TO 362	12871.14
115	PLAT 363 TO 365	12871.14
116	PLAT 366 TO 368	12871.14
117	PLAT 369 TO 371	12871.14
118	PLAT 372 TO 374	12871.14
119	PLAT 375 TO 377	12871.14
120	PLAT 378 TO 380	12871.14
121	PLAT 381 TO 383	12871.14
122	PLAT 384 TO 386	12871.14
123	PLAT 387 TO 389	12871.14
124	PLAT 390 TO 392	12871.14
125	PLAT 393 TO 395	12871.14
126	PLAT 396 TO 398	12871.14
127	PLAT 399 TO 401	12871.14
128	PLAT 402 TO 404	12871.14
129	PLAT 405 TO 407	12871.14
130	PLAT 408 TO 410	12871.14
131	PLAT 411 TO 413	12871.14
132	PLAT 414 TO 416	12871.14
133	PLAT 417 TO 419	12871.14
134	PLAT 420 TO 422	12871.14
135	PLAT 423 TO 425	12871.14
136	PLAT 426 TO 428	12871.14
137	PLAT 429 TO 431	12871.14
138	PLAT 432 TO 434	12871.14
139	PLAT 435 TO 437	12871.14
140	PLAT 438 TO 440	12871.14
141	PLAT 441 TO 443	12871.14
142	PLAT 444 TO 446	12871.14
143	PLAT 447 TO 449	12871.14
144	PLAT 450 TO 452	12871.14
145	PLAT 453 TO 455	12871.14
146	PLAT 456 TO 458	12871.14
147	PLAT 459 TO 461	12871.14
148	PLAT 462 TO 464	12871.14
149	PLAT 465 TO 467	12871.14
150	PLAT 468 TO 470	12871.14
151	PLAT 471 TO 473	12871.14
152	PLAT 474 TO 476	12871.14
153	PLAT 477 TO 479	12871.14
154	PLAT 480 TO 482	12871.14
155	PLAT 483 TO 485	12871.14
156	PLAT 486 TO 488	12871.14
157	PLAT 489 TO 491	12871.14
158	PLAT 492 TO 494	12871.14
159	PLAT 495 TO 497	12871.14
160	PLAT 498 TO 500	12871.14



SELF OWNED HOUSES

PROPOSED LAYOUT PLAN FOR PRADHANMANTRI
 AWAS YOJNA, 192 E W S FLATS & 65 SELF OWNED
 HOUSES DEVELOPED BY SPARSH TRANSPORT
 CARRIER PVT. LTD.
 THROUGH DIRECTOR DEEPAK AGRAWAL S/O SHRI
 VIJAY AGRAWAL, SITE AT KH NO. 333, 332, VIL.
 URDLA JAGR, BAREILLY



SCALE: 1:200
 NORTH

APPROVED BY
 CHIEF ENGINEER
 URBAN DEVELOPMENT
 BAREILLY

BAREILLY PMA / SCHEME

NO.	DESCRIPTION	AREA (SQ.M)
1	PLAT 1 TO 19	12871.14
2	PLAT 20 TO 26	12871.14
3	PLAT 27 TO 29	12871.14
4	PLAT 30 TO 32	12871.14
5	PLAT 33 TO 35	12871.14
6	PLAT 36 TO 38	12871.14
7	PLAT 39 TO 41	12871.14
8	PLAT 42 TO 44	12871.14
9	PLAT 45 TO 47	12871.14
10	PLAT 48 TO 50	12871.14
11	PLAT 51 TO 53	12871.14
12	PLAT 54 TO 56	12871.14
13	PLAT 57 TO 59	12871.14
14	PLAT 60 TO 62	12871.14
15	PLAT 63 TO 65	12871.14
16	PLAT 66 TO 68	12871.14
17	PLAT 69 TO 71	12871.14
18	PLAT 72 TO 74	12871.14
19	PLAT 75 TO 77	12871.14
20	PLAT 78 TO 80	12871.14
21	PLAT 81 TO 83	12871.14
22	PLAT 84 TO 86	12871.14
23	PLAT 87 TO 89	12871.14
24	PLAT 90 TO 92	12871.14
25	PLAT 93 TO 95	12871.14
26	PLAT 96 TO 98	12871.14
27	PLAT 99 TO 101	12871.14
28	PLAT 102 TO 104	12871.14
29	PLAT 105 TO 107	12871.14
30	PLAT 108 TO 110	12871.14
31	PLAT 111 TO 113	12871.14
32	PLAT 114 TO 116	12871.14
33	PLAT 117 TO 119	12871.14
34	PLAT 120 TO 122	12871.14
35	PLAT 123 TO 125	12871.14
36	PLAT 126 TO 128	12871.14
37	PLAT 129 TO 131	12871.14
38	PLAT 132 TO 134	12871.14
39	PLAT 135 TO 137	12871.14
40	PLAT 138 TO 140	12871.14
41	PLAT 141 TO 143	12871.14
42	PLAT 144 TO 146	12871.14
43	PLAT 147 TO 149	12871.14
44	PLAT 150 TO 152	12871.14
45	PLAT 153 TO 155	12871.14
46	PLAT 156 TO 158	12871.14
47	PLAT 159 TO 161	12871.14
48	PLAT 162 TO 164	12871.14
49	PLAT 165 TO 167	12871.14
50	PLAT 168 TO 170	12871.14
51	PLAT 171 TO 173	12871.14
52	PLAT 174 TO 176	12871.14
53	PLAT 177 TO 179	12871.14
54	PLAT 180 TO 182	12871.14
55	PLAT 183 TO 185	12871.14
56	PLAT 186 TO 188	12871.14
57	PLAT 189 TO 191	12871.14
58	PLAT 192 TO 194	12871.14
59	PLAT 195 TO 197	12871.14
60	PLAT 198 TO 200	12871.14
61	PLAT 201 TO 203	12871.14
62	PLAT 204 TO 206	12871.14
63	PLAT 207 TO 209	12871.14
64	PLAT 210 TO 212	12871.14
65	PLAT 213 TO 215	12871.14
66	PLAT 216 TO 218	12871.14
67	PLAT 219 TO 221	12871.14
68	PLAT 222 TO 224	12871.14
69	PLAT 225 TO 227	12871.14
70	PLAT 228 TO 230	12871.14
71	PLAT 231 TO 233	12871.14
72		